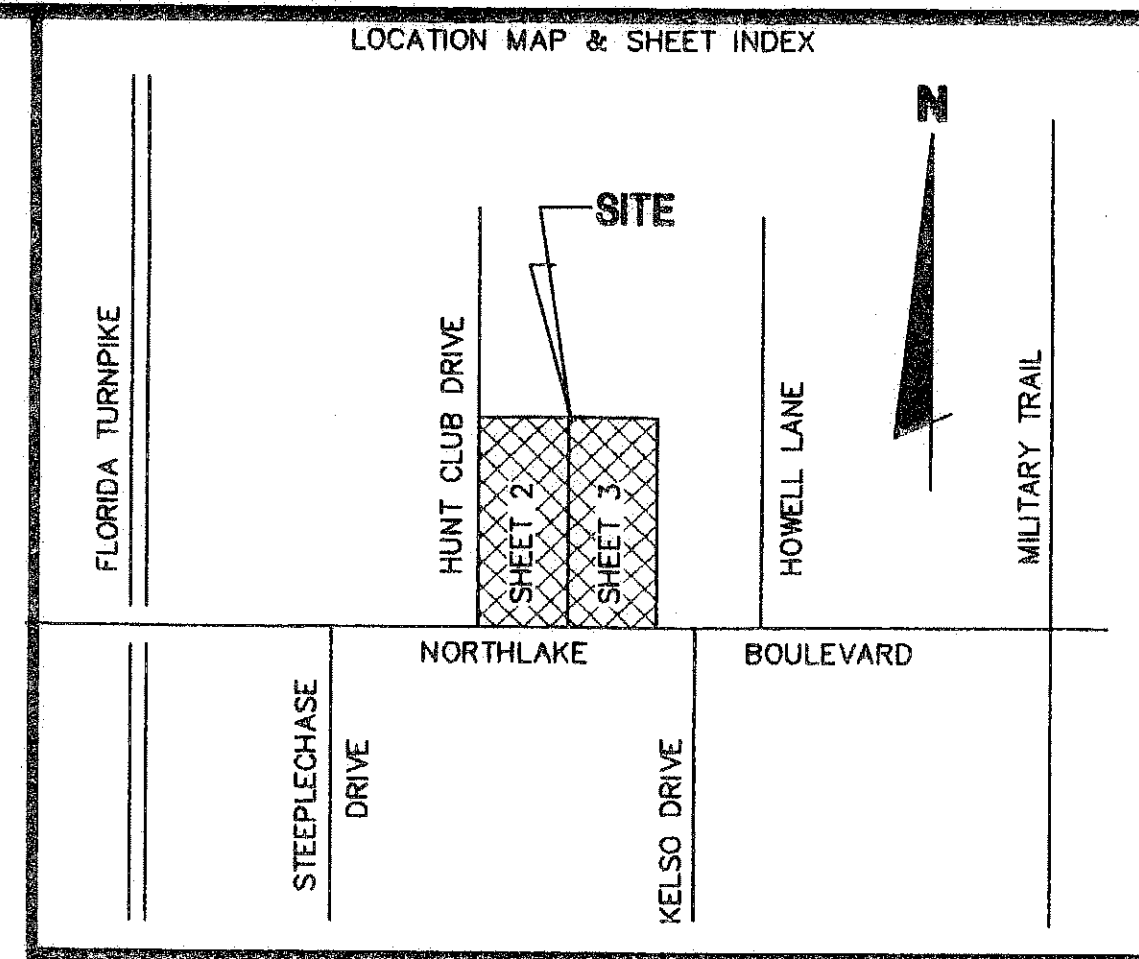


I, SHARON R. BOCK, CLERK & COMPTROLLER OF THE CIRCUIT COURT OF PALM BEACH COUNTY, FLORIDA, HEREBY CERTIFY THAT THIS PLAT WAS FILED FOR RECORD IN PLAT BOOK PAGE PALM BEACH COUNTY, FLORIDA, PUBLIC RECORDS, THIS DAY OF 2008. SHARON R. BOCK, CLERK & COMPTROLLER OF THE CIRCUIT COURT, PALM BEACH COUNTY, FLORIDA BY: DEPUTY CLERK



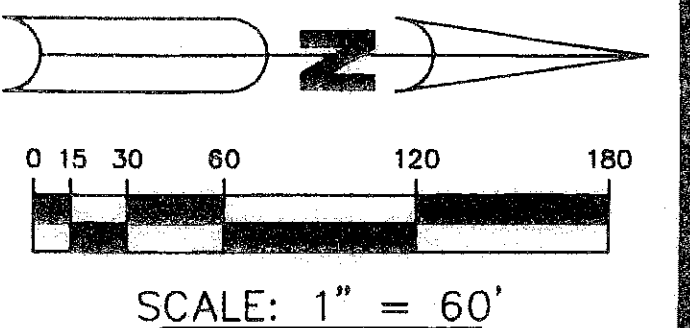
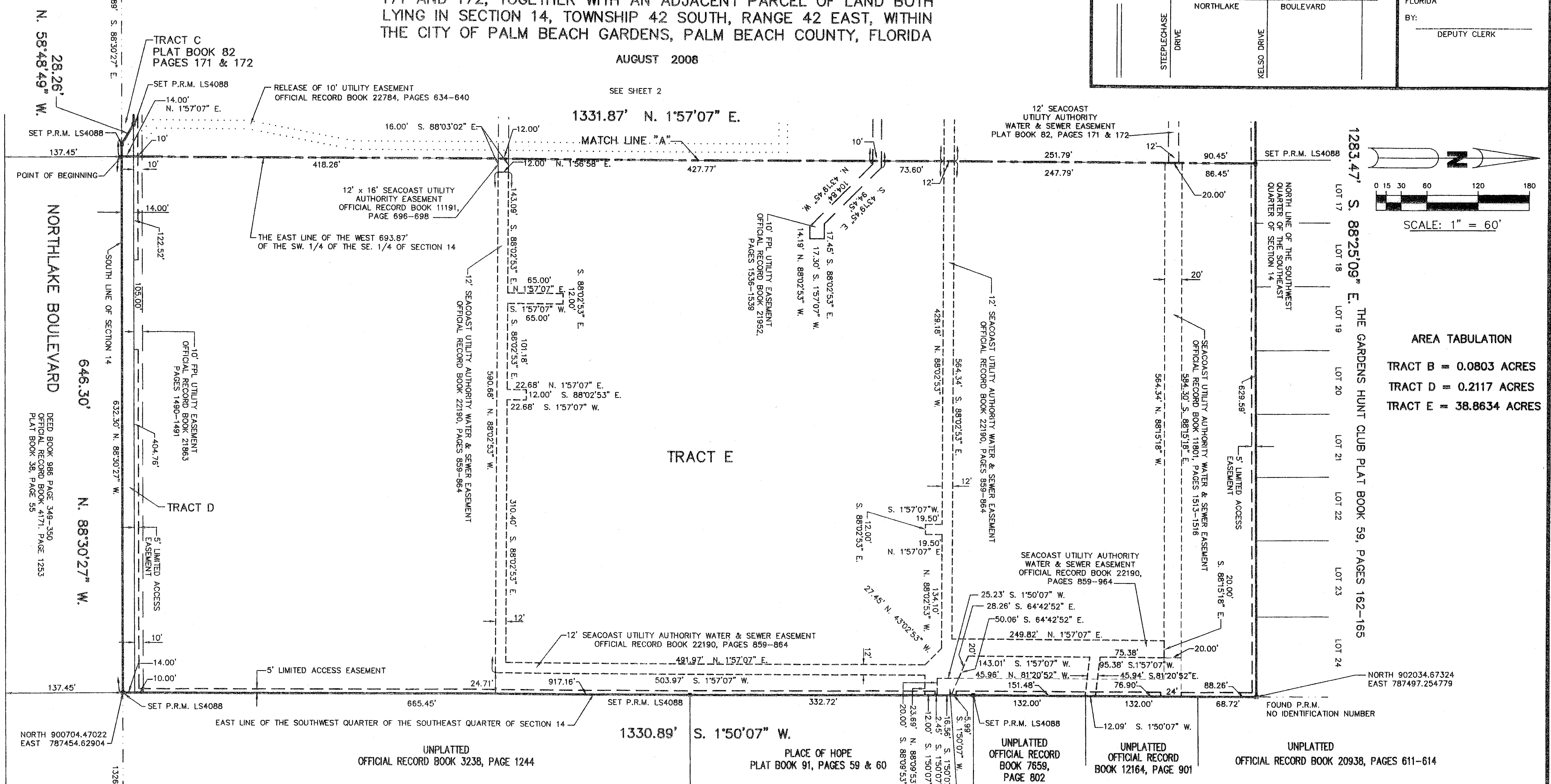
# CHRIST FELLOWSHIP CHURCH NORTH CAMPUS

BEING A REPLAT OF THE BOUNDARY PLAT OF PALM BEACH GARDENS CHRIST FELLOWSHIP CHURCH AS RECORDED IN PLAT BOOK 82, PAGES 171 AND 172, TOGETHER WITH AN ADJACENT PARCEL OF LAND BOTH LYING IN SECTION 14, TOWNSHIP 42 SOUTH, RANGE 42 EAST, WITHIN THE CITY OF PALM BEACH GARDENS, PALM BEACH COUNTY, FLORIDA

AUGUST 2008

SEE SHEET 2

POINT OF COMMENCEMENT SOUTHWEST CORNER OF THE SOUTHEAST QUARTER OF SECTION 14 FOUND PALM BEACH COUNTY BRASS DISK IN CONCRETE



AREA TABULATION

TRACT B	= 0.0803 ACRES
TRACT D	= 0.2117 ACRES
TRACT E	= 38.8634 ACRES

NOTICE: THIS PLAT, AS RECORDED IN ITS GRAPHIC FORM, IS THE ORIGINAL DEPICTION OF THE SUBDIVIDED LANDS DESCRIBED HEREIN AND WILL IN NO CIRCUMSTANCES BE SUPPLANTED IN AUTHORITY BY ANY OTHER GRAPHIC OR DIGITAL FORM OF THE PLAT. THERE MAY BE ADDITIONAL RESTRICTIONS THAT ARE NOT RECORDED ON THIS PLAT THAT MAY BE FOUND IN THE PUBLIC RECORDS OF THIS COUNTY.

LEGEND: P.R.M. = PERMANENT REFERENCE MONUMENT  
STATE PLANE COORDINATE DATA: COORDINATES SHOWN ARE GRID LINEAR UNIT = US SURVEY FOOT ZONE = FLORIDA EAST ALL DISTANCES ARE GROUND DATUM = NAD 83, 1980 ADJUSTED SCALE FACTOR = 1.00004218 GROUND DISTANCE X SCALE FACTOR = GRID DISTANCE 1983 STATE PLANE TRAVERSE MERCATOR PROJECTION

THE BEARINGS ARE BASED ON THE SOUTH LINE OF THE SOUTHEAST QUARTER OF SECTION 14, TOWNSHIP 42 SOUTH, RANGE 42 EAST, PALM BEACH COUNTY, FLORIDA BEARING NORTH 88°30'27" WEST, ACCORDING TO THE NORTH AMERICAN DATUM OF 1983, AND READJUSTED IN 1990, AS COMPUTED ON THE FLORIDA STATE PLANE COORDINATE SYSTEM.  
NO BUILDINGS, IMPROVEMENTS OF ANY KIND, TREES OR SHRUBS SHALL BE PLACED ON ANY EASEMENT WITHOUT PRIOR WRITTEN APPROVAL OF ALL EASEMENT BENEFICIARIES AND ALL APPLICABLE CITY OR COUNTY APPROVALS OR PERMITS AS REQUIRED FOR SUCH ENCROACHMENTS.

THIS INSTRUMENT WAS PREPARED BY JAY ALAN BONNER, LS4088 IN THE OFFICE OF SUNSHINE SURVEYORS, 7502 159th COURT NORTH, PALM BEACH GARDENS, FLORIDA 33418

SUNSHINE SURVEYORS PO Box 31224 LB4725 Palm Beach Gardens Florida 33420-1224